

# Discover El Calafate

## The Gateway to Patagonia

Experience the magic of southern Patagonia in a 4-day adventure filled with breathtaking landscapes, unique excursions, and unforgettable moments.

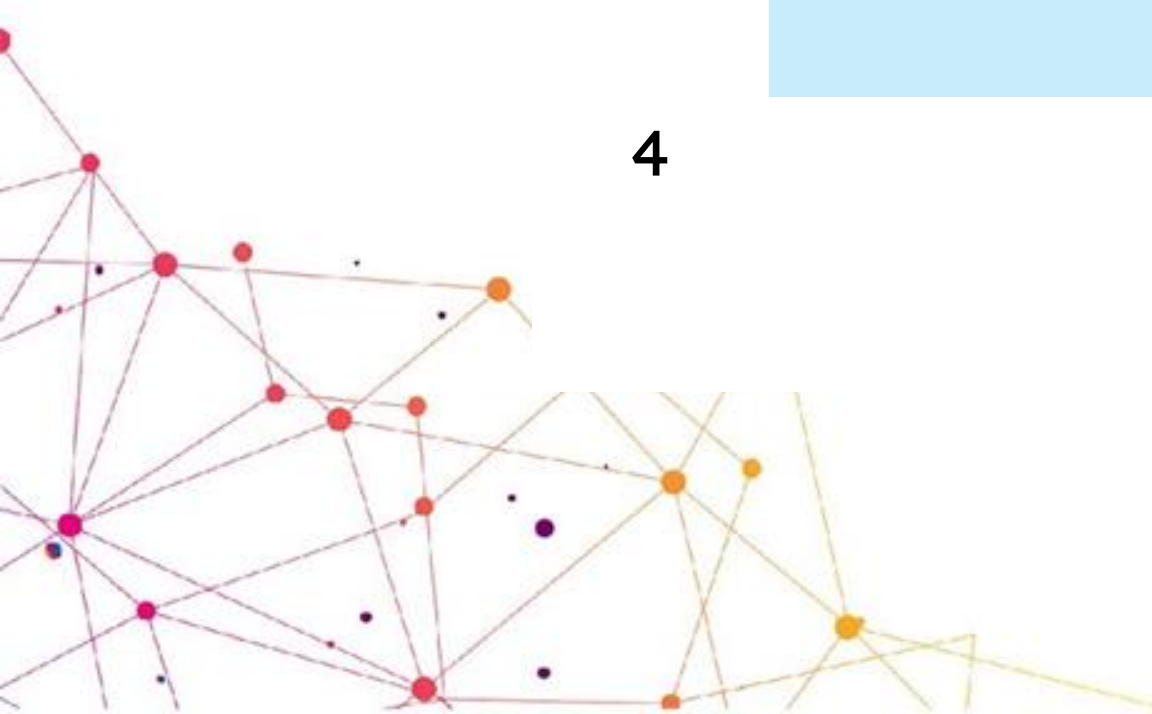


### **El Calafate, ARGENTINA**

This city, located near the Cordillera de los Andes, is the top destination that hosts international tourists arriving in Patagonia, eager to see the stunning Perito Moreno Glacier, among other beautiful sights, in the UNESCO World Heritage Site of Los Glaciares National Park. El Calafate used to be a remote town and has since grown exponentially as Patagonia has evolved; becoming what is now recognized as the most important tourist city in Santa Cruz, with a stable population of about 25,000 inhabitants, excellent attractions and accommodations, and quality services of all kinds available year round.

# PROPOSED ITINERARY

Day	Activities	Overnight
1	Arrival - Transfer to the hotel	El Calafate, AR
2	Full Day Los Glaciares National Park	El Calafate, AR
3	Full day “Estancia de campo” Nipebo Aike	El Calafate, AR
4	Transfer to the Airport	El Calafate, AR





# FLIGHTS WITH AEROLINEAS ARGENTINAS

Departure:

AR 1896 | Dec 13 |  
Buenos Aires (AEP) – El Calafate (FTE) |  
16:15 – 19:35

Return:

AR 1897 | Dec 16 |  
El Calafate (FTE) – Buenos Aires (AEP) |  
17:45 – 20:45





# ACCOMMODATION

## 3 NIGHTS AT HOTEL MIRADOR DEL LAGO OR SIMILAR (4★)

- 4 Days / 3 Nights stay
- Daily breakfast included
- Comfortable rooms with scenic views





# DECEMBER 14<sup>TH</sup> - FULL DAY TOUR

## Parque Nacional Los Glaciares.

The main attractions of the Perito Moreno National Park are undoubtedly the ancient glaciers and the vast lakes, the largest and most significant attraction being the immense Perito Moreno glacier. This remnant of the ice age was declared a World Heritage Site by UNESCO in 1981, with its 250 square miles – 6 miles wide and 60 meters high – and fascinating with its remarkable standout beauty. There are seven balconies (or viewpoints), located at varying heights and distances from the glacier, connected by paths and stairs. From the highest balcony, you will see the boundless surface of the glacier, the northern and southern faces. As you make your way down, you will discover the second balcony closer to the ice. This is the place where, on occasion, the ice forms a dam. On the lowest level balcony, you will be closest to the glacier, giving you an entirely different perspective for an unforgettable look at this archaic giant





## Navigation in front of the Glacier

The activity day begins with a transfer from your accommodation in El Calafate to Los Glaciares National Park.

We will travel along Route 11, observing the Patagonian steppe with its characteristic fauna and flora, as well as the famous Argentino Lake. Along the way, our expert guides will share insights about the history, ecology, and geology of the region.

Upon entering the National Park, we'll make a stop at the “**Mirador de los Suspiros**” (Sighs Viewpoint), where we'll get our **first glimpse of the Rico Arm and the southern face of the iconic Perito Moreno Glacier.**

We will then begin our walk along the **walkways of Los Glaciares National Park**, which stretch approximately 5 km and are divided into various levels. These paths allow visitors to appreciate this UNESCO World Heritage glacier from different panoramic perspectives, each offering a unique and breathtaking view.

As a **complementary service**, we will enjoy a **one-hour boat navigation** along one of the glacier's faces, getting within just a few meters of its towering ice wall. This experience offers a **completely different perspective** of its size and its thunderous ice calving into Argentino Lake—an ideal way to enhance this once-in-a-lifetime experience.

After this unforgettable adventure, we will begin our return journey to El Calafate, having witnessed and sailed along the grandeur of this world-famous glacier.





## DECEMBER 15<sup>TH</sup> - FULL DAY TOUR

### VISIT TO “EL CHALTEN”

Full day tour to El Chaltén, a picturesque mountain village known as Argentina’s Trekking Capital, located 220 km away from Calafate.

On the way, you will cross the majestic Santa Cruz River and make a special stop at the historic La Leona Ranch, located on the banks of the river of the same name. This charming stop is perfect for stretching your legs, using the restrooms, and enjoying some local food and drinks.

Back on the road, and weather permitting, you will stop at the Viedma Glacier viewpoint, where breathtaking panoramic views of the Viedma Glacier, Mount Fitz Roy, and Mount Torre await. A unique opportunity to witness the vastness of Patagonia’s natural beauty.





Upon arrival in El Chaltén, the guides will take you on a short tour of this enchanting village nestled within Los Glaciares National Park. Here, you will enjoy two accessible but magical hikes:

- Mirador de los Cóndores: A scenic hike offering the chance to spot condors in their natural habitat, with unforgettable views of Fitz Roy, Cerro Torre, and the village framed by dreamlike landscapes.
- Chorrillo del Salto: After a delicious homemade lunch at a typical local restaurant, we'll follow a trail leading to a spectacular waterfall surrounded by pristine nature.

Lunch is included in this tour





## THE PACKAGE INCLUDES

- Round-trip airfare from Buenos Aires to El Calafate
- Private airport transfers upon arrival and departure
- Accommodation in a 4-star hotel (subject to availability), including breakfast
- Full-day tour to Los Glaciares National Park, featuring a boat tour in front of Perito Moreno Glacier
- Full-day tour to El Chalten (lunch included)
- Coordination and continuous assistance throughout the trip

\*The price is based on 25 confirmed participants. No reservations have been made yet; both flights and accommodation are subject to availability. The access to National Parks is not included and is payable onsite individually.